

# Supporting Learning at Home



# A Student Guide

# Year 11

Name: \_\_\_\_\_

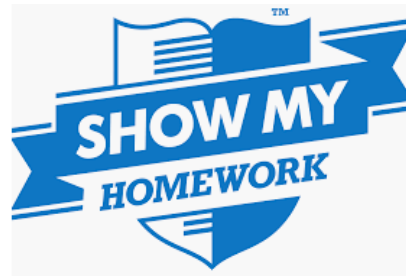
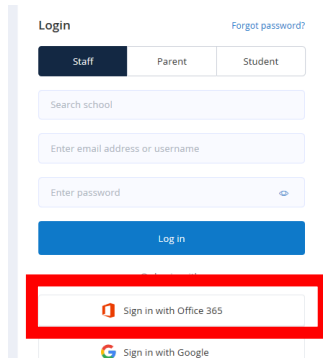
enjoylearnsucceed

# What do I need to do?

## ***How do I know what work I need to do?***

**Every day** that you should be in school and you are not, you will need to **log on to** Show My Homework to make sure that you have completed any homework that has been set. It is vital that you are keeping up to date with the essential work and revision that you need to do in preparation for your exams. If you have a smartphone, the easiest way to do this is via the app or you can access the website.

<https://www.satchelone.com/dashboard>



You will log on to the website exactly the same way as you have practiced in school. This will tell you exactly what work you need to do, what you need to do once you have completed the work and how you tell your teacher that you have completed it.

## ***How will I know what I need to do and when?***

Whilst you are not in school, you need to structure your timetable the same as you would do as if you were here. This means that if you should be in a maths lesson, you need to be doing maths work. Remember, the qualifications that you will complete will remain with you for the rest of your life and will affect the choices that you will be able to make in your future.

## ***What do I do if my log in for Show My Homework does not work?***

Firstly, check you are logging on correctly. You need to sign in on the Office 365 link using your school email address and password. If this does not work, email [homework@beckfootthornton.org](mailto:homework@beckfootthornton.org) for help.

## ***What do I do if I have finished all my work for that day?***

There are loads of other resources that you can use to support your work at home and prepare for your exams.

## GCSE Pod

This has lots of short video clips that you can watch and make notes using one of the structures that you have been given in your pack.

To log in – use your school email address and password.

### LOGIN

**NEW HERE? GET STARTED**

USERNAME OR EMAIL ADDRESS

PASSWORD

**LOGIN**

If you have not logged on before, please set up as a new user using your details below:

## NEW USER

**FIRST NAME**

**LAST NAME**

**DATE OF BIRTH**

**SCHOOL**

<https://www.gcsepod.com/>

## MathsWatch

You have already been given the log in details for MathsWatch in your blue revision folders.

<https://vle.mathswatch.co.uk/vle/>



## Revision Websites

There are loads of different revision websites that you can use to help you. Make sure you have checked that you are revising information for the right specification. Details of these can be found in this booklet. One example is BBC bitesize:

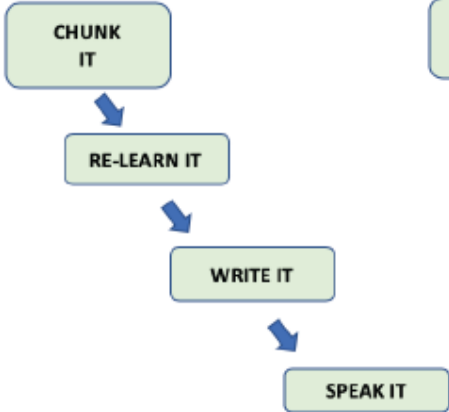
<https://www.bbc.co.uk/bitesize/levels/z98jmp3>

## Revision Guides

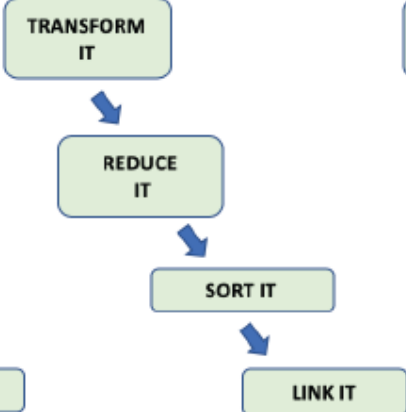
You will already have your revision guides, blue revision folder at home. Use the Pixl Revisit strategies and CGP How to Revise book that you have been given to help you.

# PiXL Re-visit

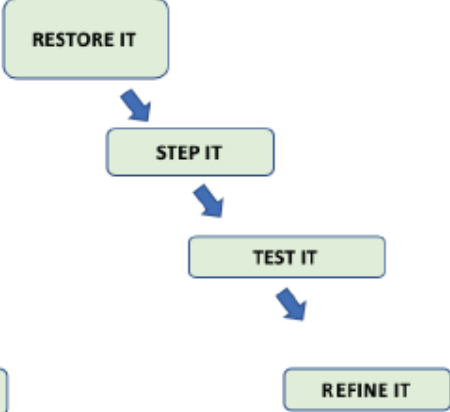
## Upload



## Process



## Download



## Exam Board information

Details of what you need to know for each subject can be found on the exam website for each subject. On here you need to look at the specification details. Remember there may be optional units that you do not need to cover. If you are uncertain, message your teacher via Show my Homework

DEPARTMENT*	EXAM BOARD*	AWARD*	DEPARTMENT*	EXAM BOARD*	AWARD*
ENGINEERING	EDEXCEL	BTEC Level 1/2	ICT	OCR	Creative iMedia
					NCFE Level 1/2 Tech Award In Health and Fitness
PE	AQA	GCSE 9-1 DANCE	PE	NCFE	GCSE Business Studies
MATHS	EDEXCEL	GCSE 9-1 MATHEMATICS	BUSINESS	WELSHBOARD	Btec Level 2 Award
MATHS	EDEXCEL	ELQ	BUSINESS	WELSHBOARD	BtEC level 2
HISTORY	EDEXCEL	GCSE 9-1 HISTORY	DESIGN TECHNOLOGY	WELSHBOARD	GCSE ART 3D
MUSIC	AQA	GCSE 9-1 MUSIC	ART (INC PHOTOGRAPHY AND TEXTILES)	EDUQAS	GCSE Art Textiles
PE	OCR	GCSE 9-1 PE	ART (INC PHOTOGRAPHY AND TEXTILES)	EDUQAS	BTEC Construction Entry Level
MFL	AQA	GCSE 9-1 FRENCH	CONSTRUCTION	EDEXCEL (inc PEARSON)	Cambridge Nat in Sports Studies
MFL	AQA	GCSE 9-1 GERMAN	PE	OCR	GCSE PHYSICS
ART (INC PHOTOGRAPHY AND TEXTILES)	EDUQAS	GCSE ART	SCIENCE	AQA	GCSE COMBINED SCIENCE
ART (INC PHOTOGRAPHY AND TEXTILES)	EDUQAS	GCSE PHOTOGRAPHY	SCIENCE	AQA	GCSE COMPUTER SCIENCE
ENGLISH (INC MEDIA)	EDUQAS	GCSE MEDIA	ICT	OCR	GCSE RELIGIOUS STUDIES
ENGLISH (INC MEDIA)	AQA	GCSE EN LANGUAGE	RE	AQA	GCSE BIOLOGY
ENGLISH (INC MEDIA)	AQA	GCSE EN LITERATURE	SCIENCE	AQA	GCSE Geography
DESIGN TECHNOLOGY	AQA	GCSE DESIGN TECHNOLOGY	GEOGRAPHY	AQA	

### Useful Websites

<b>Website</b>	<b>Use</b>
<a href="https://www.satchelone.com/dashboard">https://www.satchelone.com/dashboard</a>	Information about work that needs to be completed from your teacher
<a href="https://www.gcsepod.com/">https://www.gcsepod.com/</a>	Revision resource
<a href="https://vle.mathswatch.co.uk/vle/">https://vle.mathswatch.co.uk/vle/</a>	Revision resource
<a href="https://www.bbc.co.uk/bitesize/levels/z98jmp3">https://www.bbc.co.uk/bitesize/levels/z98jmp3</a>	Revision resource
<a href="https://www.samlearning.com/">https://www.samlearning.com/</a>	Revision resource
<a href="https://www.aqa.org.uk/">https://www.aqa.org.uk/</a>	AQA Exam board
<a href="https://educas.co.uk/">https://educas.co.uk/</a>	EDUCAS Exam board
<a href="https://ocr.org.uk/">https://ocr.org.uk/</a>	OCR exam board
<a href="https://qualifications.pearson.com/en/home.html">https://qualifications.pearson.com/en/home.html</a>	Edexcel Exam board
<a href="https://www.ncfe.org.uk/">https://www.ncfe.org.uk/</a>	NCFE Exam board
<a href="https://www.wjec.co.uk/">https://www.wjec.co.uk/</a>	Welshboard Exam Board